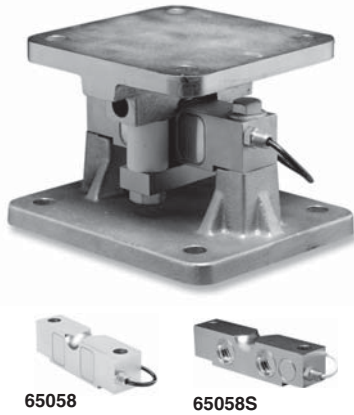


Tank Weighing Assembly



FEATURES

- Rated capacities of 20,000 to 200,000 pounds
- Mounts directly to the floor or structural support
- Self-checking with provisions for thermal expansion/contraction
- Insensitive to side loads and bending moments
- High output - well suited to high deadload/low liveload applications
- Load cells have matched outputs for multi-cell systems
- Integral conduit adaptor
- Trade certified load cells for NTEP Class III: 10000 divisions; Class III: 5000 divisions and OIML R60 3000 divisions
- *Sensorgage*™ sealed to IP67 standards
- Factory Mutual System Approved for Classes I, II, III; Divisions 1 and 2; Groups A through G. Also, non-incendive ratings (No barriers!)

DESCRIPTION

The 65069-TWA is a high capacity truck scale weighing assembly.

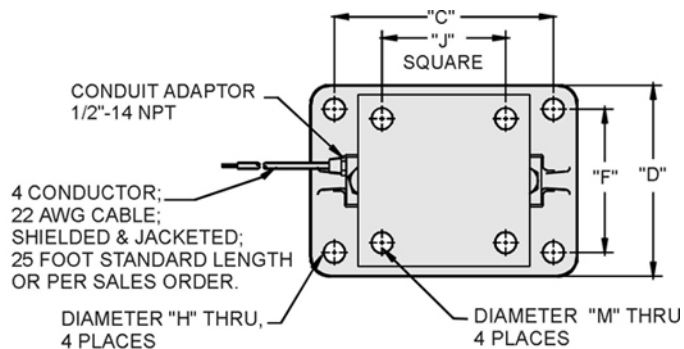
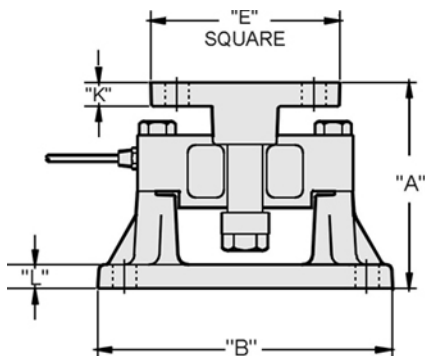
This product is designed to simplify the installation of the 65058 load cell into a certified Legal For Trade high capacity weigh bridge. The load cell is nickel plated and sealed to IP67 standards, assuring reliability. The mount assembly is provided with a yellow zinc coat finish to prevent rust.

This weighing assembly is rated intrinsically safe by the Factory Mutual System (FM); making it suitable for use in potentially explosive environments. This weighing assembly is certified for Legal For Trade applications by both American NTEP and International OIML standards.

APPLICATIONS

- "Legal for Trade" weighing
- Tank, bin and hopper weighing
- Silo weighing
- Batching, blending, mixing and inventory monitoring

OUTLINE DIMENSIONS in inches



Wiring

+ Excitation = Red; - Excitation = Black; + Output = Green; - Output = White

CAPACITY	A	B	C	D	E	F	H	J	K	L	M	WEIGHT
20K - 25K	6.50	10.00	7.50	8.00	8.00	6.00	0.78	6.00	0.75	0.75	0.78	44.0
30K - 40K	7.80	14.00	11.50	10.00	8.00	7.50	1.12	6.00	0.75	1.00	0.78	71.0
50K - 100K	9.50	14.00	11.50	10.00	9.00	7.50	1.12	6.50	1.00	1.00	1.12	110.0
200K	14.75	25.00	20.00	16.00	12.00	11.00	1.63	8.00	1.50	1.50	1.63	335.0

Capacities are in pounds.

SPECIFICATIONS

PARAMETER	VALUE				UNIT
Rated capacity-R.C. (E_{max})	20K, 25K, 30K, 40K, 50K, 60K, 75K, 100K, 125K, 200K				lbs
NTEP/OIML Accuracy class	NTEP III	NTEP IIII	Standard	OIML R60	
Maximum no. of intervals (n)	5000 multiple	10000 multiple	--	3000	
$Y = E_{max}/V_{min}$	See NTEP cert. 86-046A3			6667	Maximum available
Rated output-R.O.	3.0				mV/V
Rated output tolerance	0.25				±% mV/V
Zero balance	1.0				±% FSO
Combined error	0.02	0.02	0.03	0.02	±% FSO
Non-repeatability	0.01	0.01	0.015	0.01	±% FSO
Creep error (30 minutes)	0.025	0.030	0.03	0.017	±% FSO
Temperature effect on zero	0.0010	0.0010	0.0015	0.0010	±% FSO/°F
Temperature effect on output	0.0008	0.0008	0.0008	0.0007	±% of load/°F
Compensated temperature range	14 to 104 (-10 to 40)				°F (°C)
Operating temperature range	0 to 150 (-18 to 65)				°F (°C)
Storage temperature range	-60 to 185 (-50 to 85)				°F (°C)
Sideload rejection ratio	500:1				
Safe sideload	100				% of R.C.
Maximum safe overload compression	150				% of R.C.
Safe overload tension	100				% of R.C.
Ultimate overload compression	300				% of R.C.
Ultimate overload tension	200				% of R.C.
Excitation, recommended	15				Vdc or Vac rms
Excitation, maximum	25				Vdc or Vac rms
Input impedance	686 - 714				Ω
Output impedance	699 - 707				Ω
Insulation resistance at 50VDC	>1000				MΩ
Material load cell	Nickel plated alloy tool steel				
Material assembly	Yellow zinc ductile iron				
Environmental protection	IP67				

FSO - Full Scale Output